

Not to be cited without prior reference to Marine Scotland Science, Marine Laboratory, Aberdeen.

*MV C-Odyssey*

## **Survey 1817H**

### **Programme**

21-25 August 2017

### **Ports**

**Loading:** Lochinver, 21 August 2017

**Unloading:** Lochinver, 25 August 2017

In setting the survey programme and specific objectives, etc. the Scientist-in-Charge needs to be aware of the restrictions on working hours and the need to build in adequate rest days and rest breaks as set out in Marine Scotland's Working Time Policy (Lab Notice 34/03). In addition, the Scientist-in-Charge must formally review the risk assessments for the survey with staff on-board before work is commenced.

In the interest of efficient data management it is now mandatory to return the Survey Report, to I Gibb and the Survey Summary Report (old ROSCOP form) to M Geldart, within four weeks of a survey ending. In the case of the Survey Summary Report a nil return is required, if appropriate.

### **Personnel**

R Watret (SIC)	(MSS)	21-25 Aug
P Stainer	(MSS)	21-25 Aug

**Project:** 104640, 5 days

**Gear:** Sub-surface passive acoustic monitoring (PAM) moorings.

### **Objectives:**

To deploy a series of moorings comprising acoustic release systems (ten subsurface acoustic release moorings) and the acoustic recording devices attached to them (ten C-POD and four Loggerhead broadband units).

This west coast marine mammal monitoring programme is part of an EMFF programme. Figure 1 and Table 1 give the locations for the moorings.

### **Procedure:**

Loading of all equipment will be carried out on 21 August. The devices and chain links to weigh the moorings down will be transported to Lochinver as organized by the logistics team. Scientific crew make their way to Lochinver and meet the vessel there. *C-Odyssey* will sail from Lochinver on the afternoon of 21 August and make for the first mooring position. The ultimate order in which the moorings are deployed will be dictated by the weather forecast and the likely shelter that can be sought along the west coast. Accurate position records will be kept detailing where the moorings are eventually placed as this may differ slightly from the planned position.

Once all the moorings have been deployed C-Odyssey will return to Lochinver by 25 August to allow the scientific crew to disembark and return to Aberdeen.

Should the weather or any other event delay the return of the C-Odyssey past 25 of August the Marine Laboratory and ships manager will be contacted.

Normal contacts will be maintained with the Marine Laboratory.

**Table 1:** Location name and position for the moorings to be deployed at each of the three general areas (North, Middle and South).

Area	Site Name	lat	long	Depth m	Lat degrees, decimalised minutes	Long degrees, decimalised minutes
North	Eilean Liubhaird	57.97	-6.38	61.89	57° 58.295' N	6° 22.615' W
	Shiant Isles	57.88	-6.27	84.44	57° 52.568' N	6° 16.329' W
	Shiant East Bank	57.99	-6.07	52.16	57° 59.335' N	6° 4.235' W
	Tolsta	58.39	-6.01	94.78	58° 23.649' N	6° 0.705' W
Middle	Arisaig	56.95	-5.92	55.08	56° 57.122' N	5° 55.092' W
	Soay	57.10	-6.21	90.64	57° 5.777' N	6° 12.352' W
	Hyskeir	56.91	-6.73	34.45	56° 54.414' N	6° 43.928' W
South	Kerrera	56.36	-5.64	25.12	56° 21.469' N	5° 38.355' W
	Garvellachs	56.25	-5.88	28.27	56° 15.173' N	5° 52.689' W
	Sound of Jura	56.07	-5.69	33.89	56° 4.216' N	5° 41.553' W

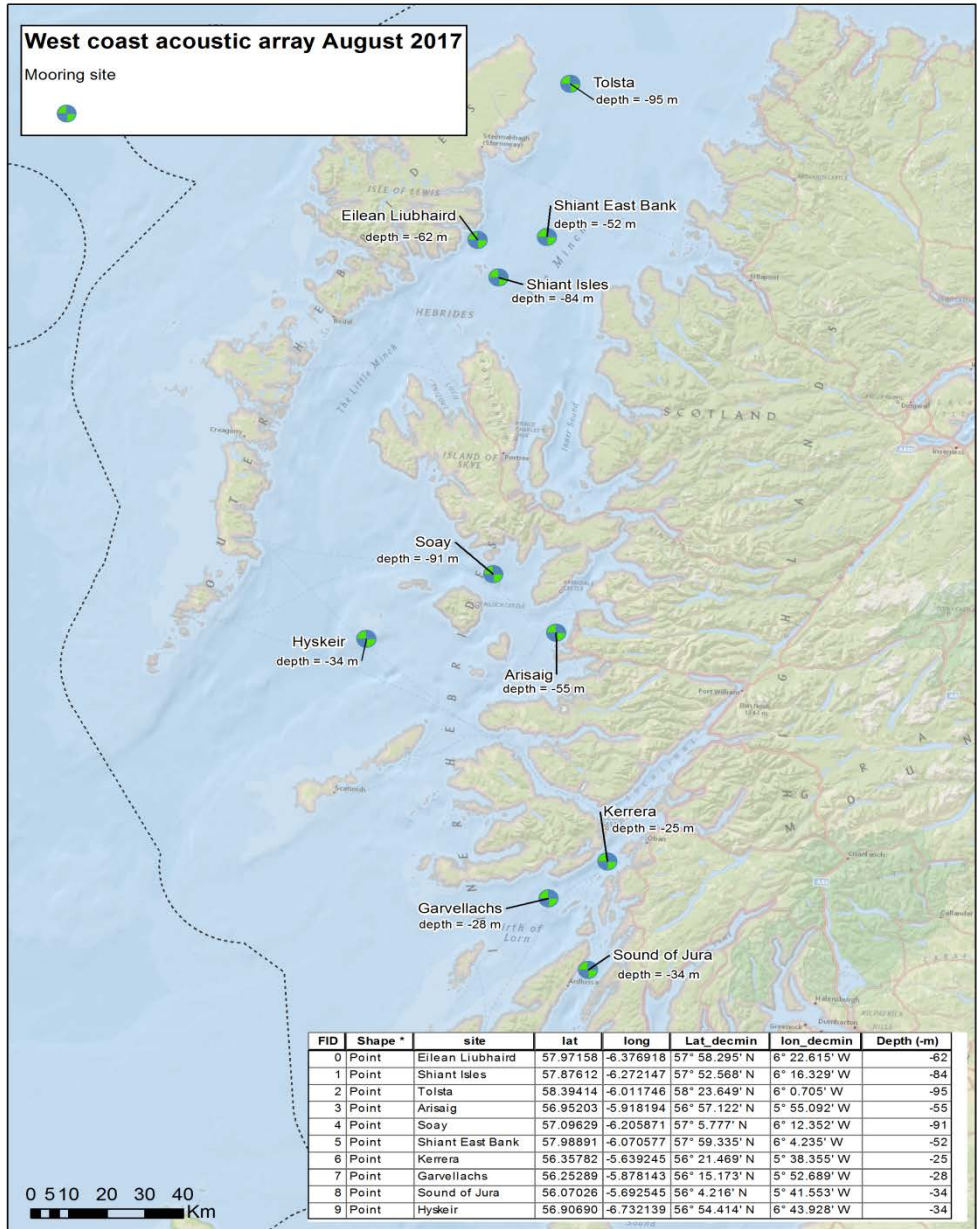


Figure 1: Positions of all 10 moorings, with depth in metres to be deployed 1817H.

**Submitted:**  
R Watret  
August 2017

**Approved:**  
F MacKay  
18 August 2017