

DEPARTMENT FOR ENVIRONMENT, FOOD AND RURAL AFFAIRS.
2007 RESEARCH VESSEL PROGRAMME: *RV CEFAS ENDEAVOUR*
Cruise Programme: C END 18X/07

STAFF:

David Limpenny (SIC)
Paul Whomersley
Roger Coggan
Suzanne Ware
Koen Vanstaen
Bill Meadows
Matthew Eagle
Karl Manear (From 22nd until 24th)

DURATION:

20th Oct – 25th Oct

LOCALITY:

The Lizard

AIMS:

1. To conduct multidisciplinary (acoustic, camera and sampling) surveys within an area off the south-west peninsular of England (Fig 1). This work is in support of Natural England's requirement to designate SACs under the EU Annex I Habitats Directive.

PLAN:

Cefas Endeavour will leave from Lowestoft at 16:30 on 20th Oct and sail immediately to the Lizard area of the south-west peninsular. On arrival we will commence survey work in the polygon described in Fig 1. The Fisheries Liaison Officer (Karl Manear) will be brought aboard as soon as possible via the ship's small boat at either Newlyn (favoured) or Falmouth (in the event of unsuitable weather conditions). Survey work will continue on a 24hr basis until 24th Oct when the vessel will return to Lowestoft aiming to dock no later than 22:00hrs on 25th Oct.

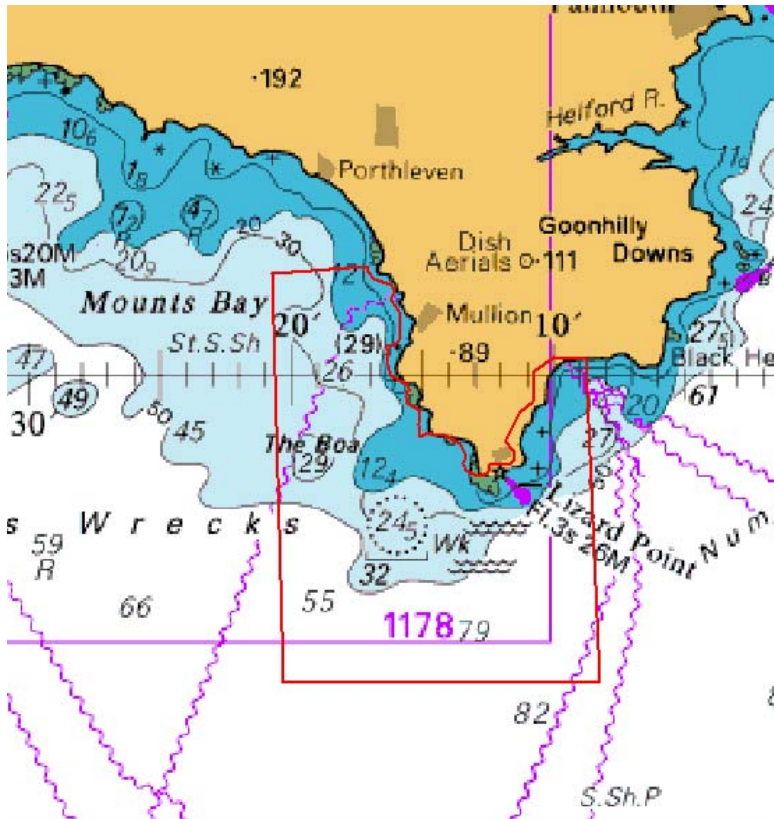


Figure 1. The area of interest is enclosed within the red polygon.

D Limpenny (SIC)

19th Oct 2007